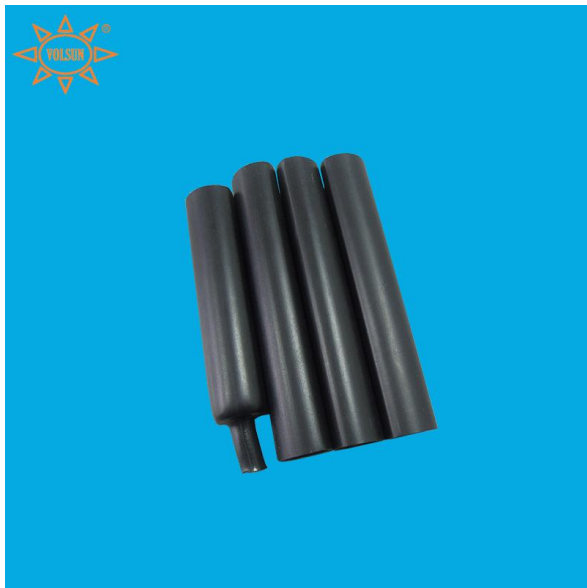




## ZBWJ-110G (3.5X) NF

### Semi rigid Medium Wall Heat Shrink Tubing ( without adhesive )



#### Description

**ZBWJ-110G (3.5X) NF** Semi rigid medium wall heat shrink tubing is made of semi rigid polyolefin through special extrusion process. This product has very good insulation, abrasion resistance and impact resistance performance. It is ideal for applications such as insulation of low and medium cable middle connections and terminations, busbar. Its 3:1 shrink ratio design is found in extensive applications in sealing purposes for electrical connections of different shapes and dimensions.

#### Features

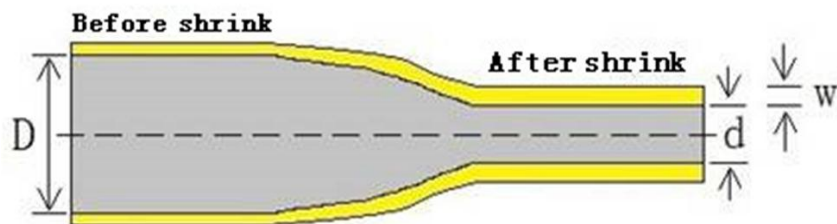
- Flame-retardant outer layer, Ultraviolet-proof
- Excellent sealing, water proof, moisture proof
- Min. shrink temperature: 80 °C
- Min full recovery temperature: 120°C
- Continuous operating temperature: -55°C ~110°C
- Shrink ratio: 3.5:1
- RoHS compliant .
- Standard color: black, more colors are available upon request



## Technical Performance

Properties	Typical Data	Test Method
Tensile strength	$\geq 14\text{MPa}$	ASTM D 2671
Elongation	$\geq 400\%$	ASTM D 2671
Tensile strength after heat ageing	$\geq 12\text{MPa}$	150°C×168h
Elongation after heat ageing	$\geq 300\%$	150°C×168h
Longitudinal change	0 ~ -10%	ASTM D 2671
Flammability	Non flame retardant	-
Dielectric strength	$\geq 18\text{kV/mm}$	IEC 60243
Volume resistivity	$\geq 10^{13}\Omega\cdot\text{cm}$	IEC 60093

## Structure





## Dimensions

Size(mm)	As supplied D (mm)	Recovered(mm)		Standard
		Internal diameter	Wall thickness	Package
		d	w	(m/pc)
Φ8.0/2.0	≥8.0	≤2.00	≥1.7	1.00 ~ 1.50
Φ9.0/3.0	≥9.0	≤3.00	≥1.8	1.00 ~ 1.50
Φ12.0/3.0	≥12.0	≤3.00	≥1.8	1.00 ~ 1.50
Φ16.0/5.0	≥16.0	≤5.00	≥2.0	1.00 ~ 1.50
Φ19.0/5.0	≥19.0	≤5.00	≥2.2	1.00 ~ 1.50
Φ22.0/6.0	≥22.0	≤6.00	≥2.2	1.00 ~ 1.50
Φ28.0/6.0	≥28.0	≤6.00	≥2.5	1.00 ~ 1.50
Φ33.0/8.0	≥33.0	≤8.00	≥2.5	1.00 ~ 1.50
Φ40.0/12.0	≥40.0	≤12.0	≥2.5	1.00 ~ 1.50
Φ45.0/12.0	≥45.0	≤12.0	≥2.5	1.00 ~ 1.50
Φ55.0/16.0	≥55.0	≤16.0	≥2.7	1.00 ~ 1.50
Φ65.0/19.0	≥65.0	≤19.0	≥2.8	1.00 ~ 1.50
Φ75.0/22.0	≥75.0	≤22.0	≥3.0	1.00 ~ 1.50



**Your Specialist in Insulation  
& Sealing and Protection Solution!**

TEL : +86-512-66386707/66386808/66386909  
FAX : +86-512-66386908

Φ85.0/25.0	≥85.0	≤25.0	≥3.0	1.00 ~ 1.50
Φ95.0/30.0	≥95.0	≤30.0	≥3.0	1.00 ~ 1.50
Φ115.0/34.0	≥115.0	≤34.0	≥3.3	1.00 ~ 1.50
Φ140.0/42.0	≥140.0	≤42.0	≥3.5	1.00 ~ 1.50
Φ160.0/50.0	≥160.0	≤50.0	≥3.5	1.00 ~ 1.50
Φ180.0/58.0	≥180.0	≤58.0	≥3.5	1.00 ~ 1.50
Φ205.0/65.0	≥205.0	≤65.0	≥3.5	1.00 ~ 1.50
Φ235.0/65.0	≥235.0	≤65.0	≥3.7	1.00 ~ 1.50
Φ265.0/75.0	≥265.0	≤75.0	≥4.0	1.00 ~ 1.50
Φ300.0/85.0	≥300.0	≤85.0	≥4.0	1.00 ~ 1.50
Φ350.0/100.0	≥350.0	≤100.0	≥4.3	1.00 ~ 1.50
Φ380.0/150.0	≥380.0	≤150.0	≥4.3	1.00 ~ 1.50
Φ410.0/150.0	≥410.0	≤150.0	≥4.3	1.00 ~ 1.50

**Note: Non-standard dimensions and package are available on request**